

# e-Scooter Trials in Greater Manchester

Conor Chaplin  
Innovation Strategy Officer  
[conor.chaplin@tfgm.com](mailto:conor.chaplin@tfgm.com)





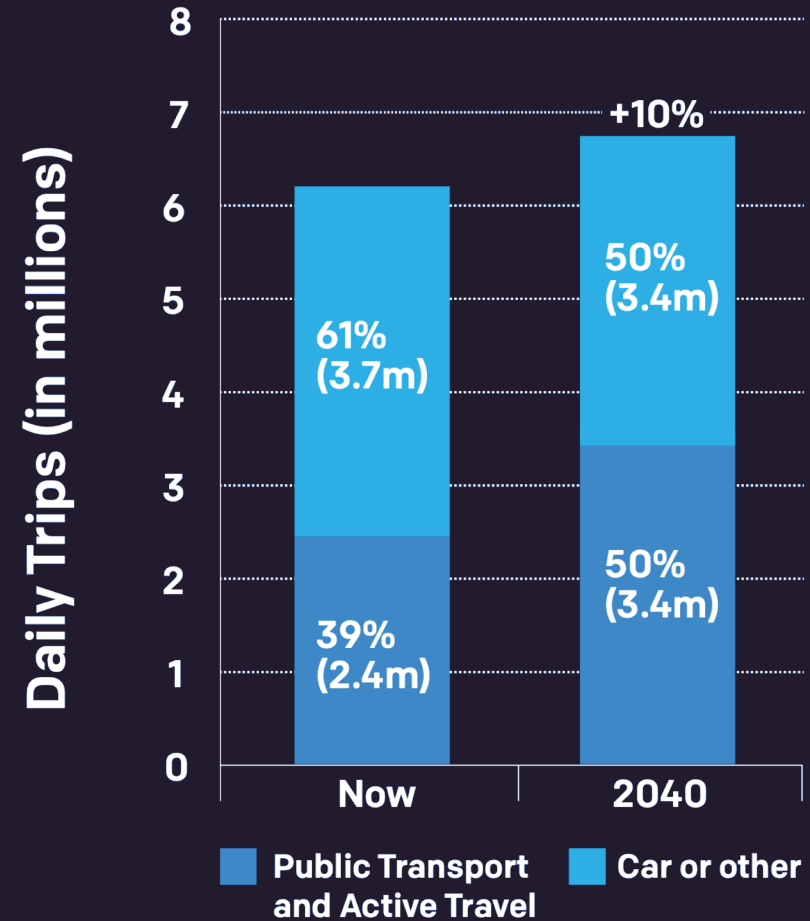
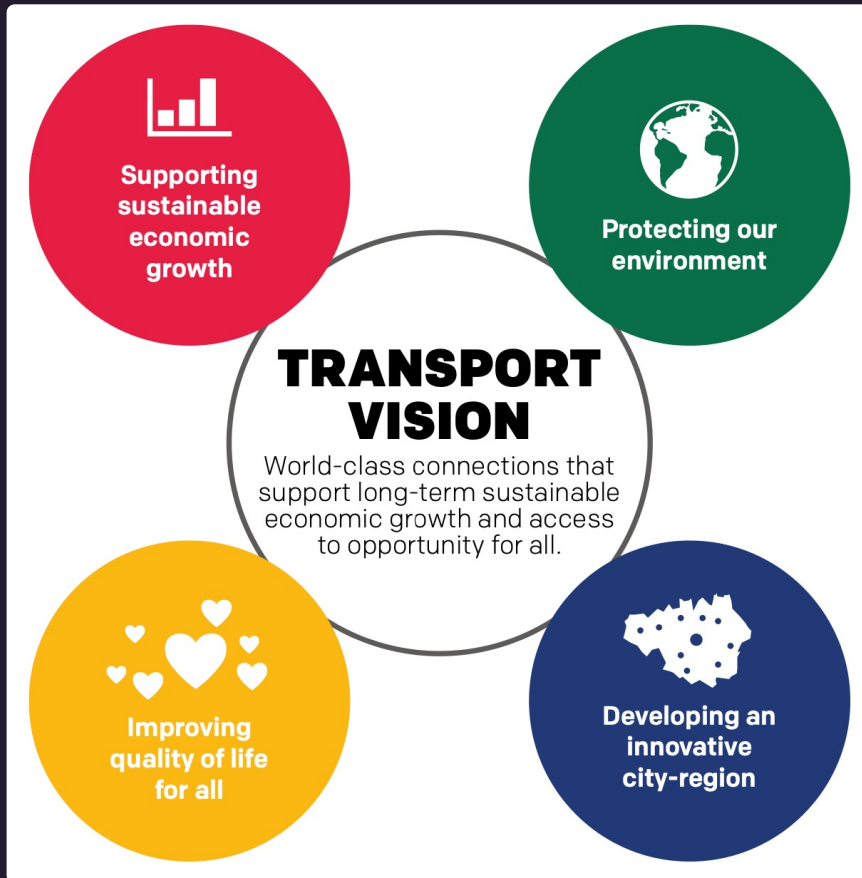
## e-Scooter trials in Greater Manchester

- Department for Transport programme of trials launched in 2020
- 12-month trials in Rochdale and Salford providing a flexible, 'green', and socially-distanced new mode
- Promote and enhance inter-modal connectivity and access to public transport hubs
- Users must have provisional driving license and be +18
- Geofencing to enforce slow-speed and no-ride zones
- Created in partnership with key stakeholders

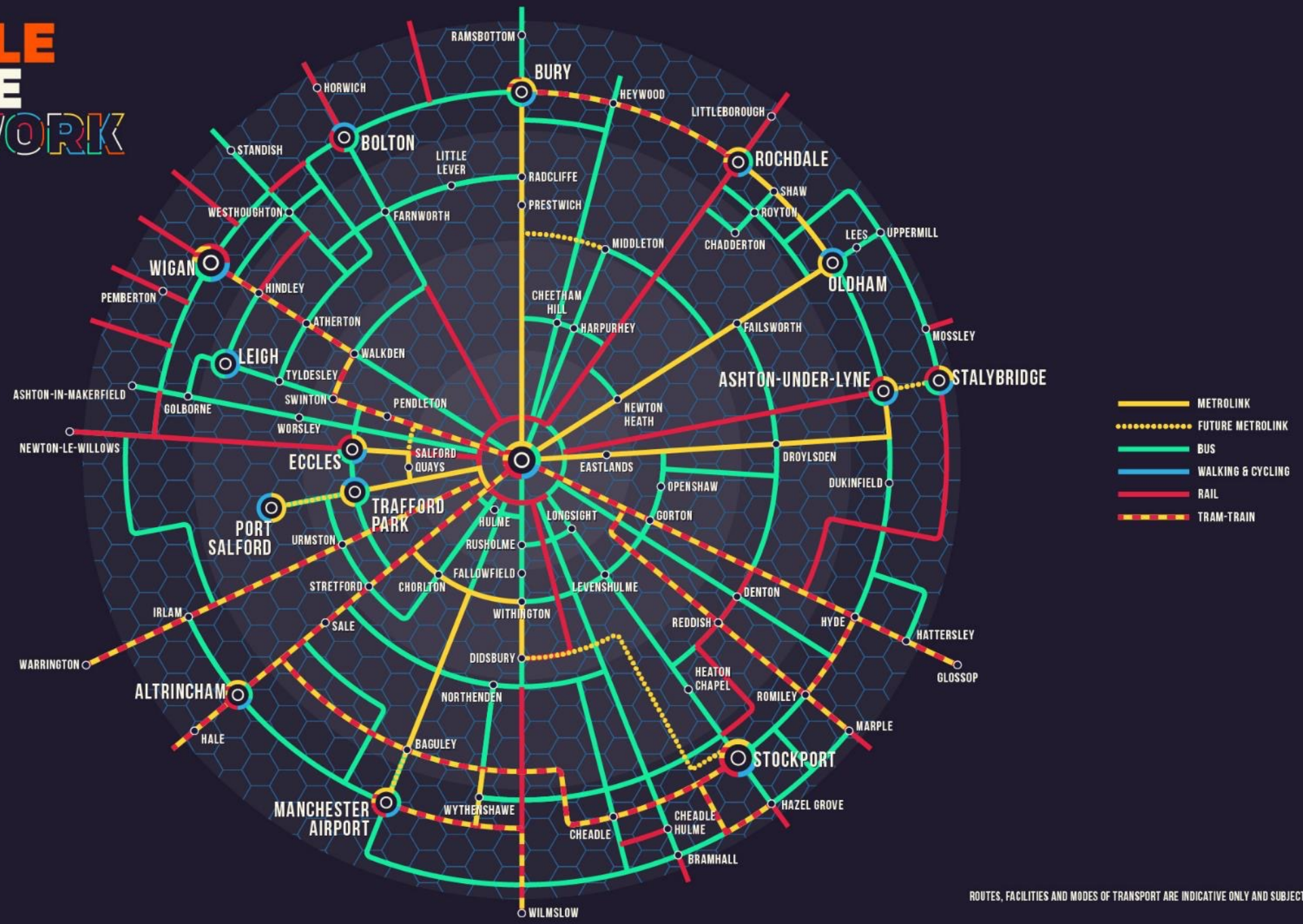




# GREATER MANCHESTER TRANSPORT STRATEGY 2040



# OUR PEOPLE OUR PLACE OUR NETWORK

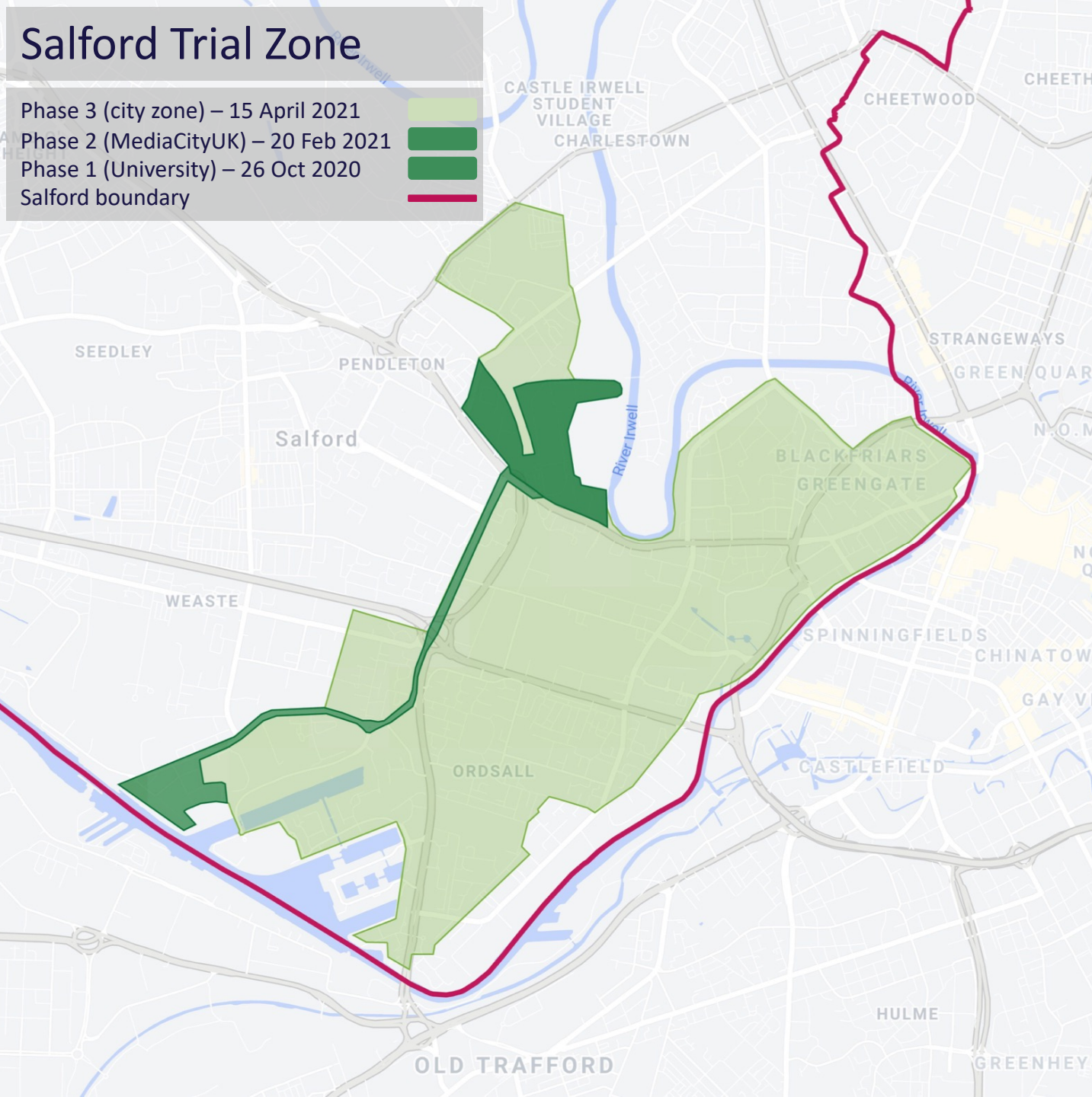


**GREATER MANCHESTER**  
DOING THINGS DIFFERENTLY

ROUTES, FACILITIES AND MODES OF TRANSPORT ARE INDICATIVE ONLY AND SUBJECT TO CHANGE.

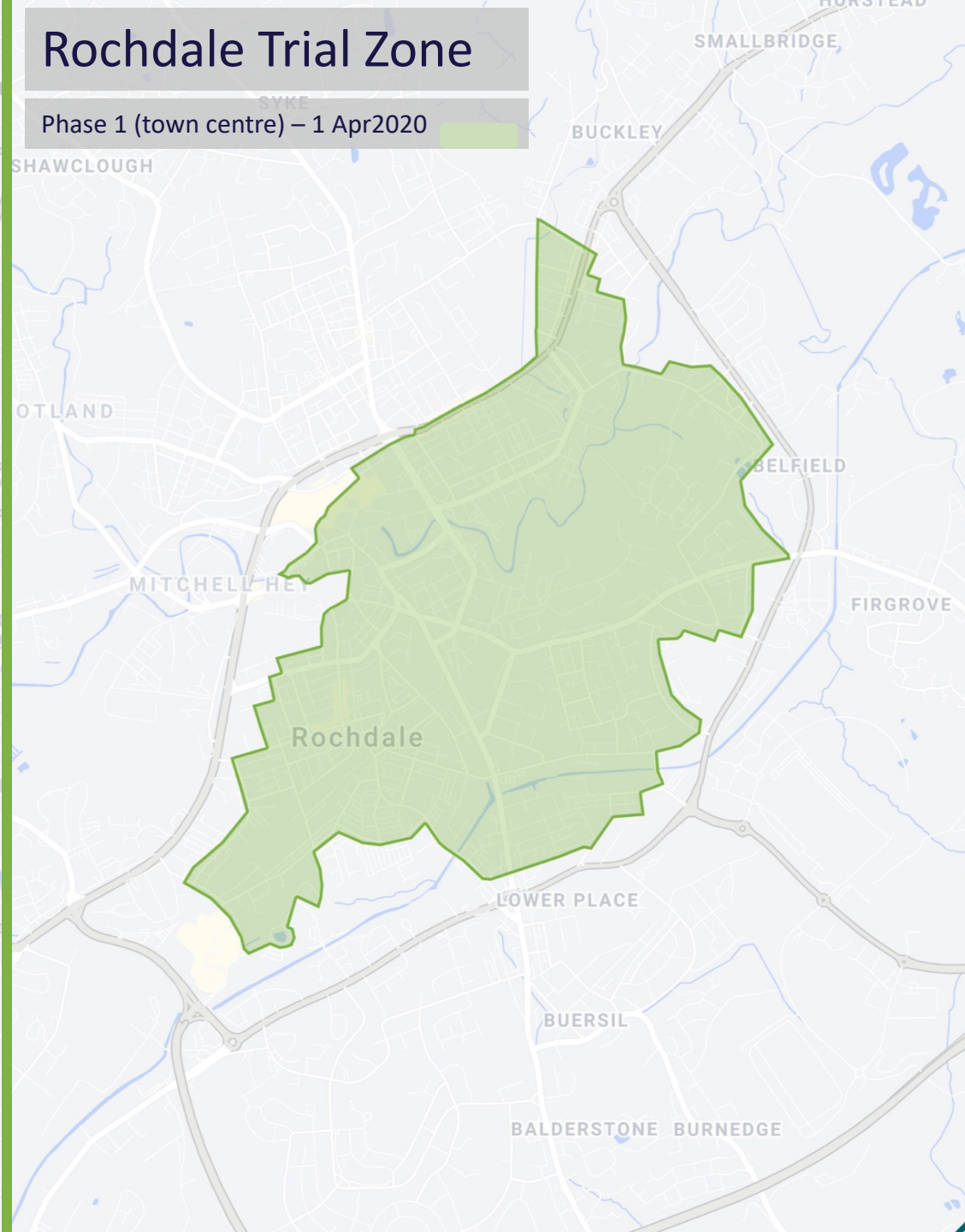
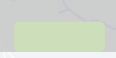
# Salford Trial Zone

- Phase 3 (city zone) – 15 April 2021
- Phase 2 (MediaCityUK) – 20 Feb 2021
- Phase 1 (University) – 26 Oct 2020
- Salford boundary



# Rochdale Trial Zone

- Phase 1 (town centre) – 1 Apr 2020



# Clifford Whitworth

The Library



60,000  
trips made

+20,000  
unique users

+110,000  
km travelled

+97%  
parking zone  
compliance

2.0 km  
average trip  
distance

300  
e-Scooters  
available

135  
Lime Aid & Lime  
Access users

0  
serious incidents

